

# SD Series 5A-350A

Combination of power connector



## SD Series:

02/01

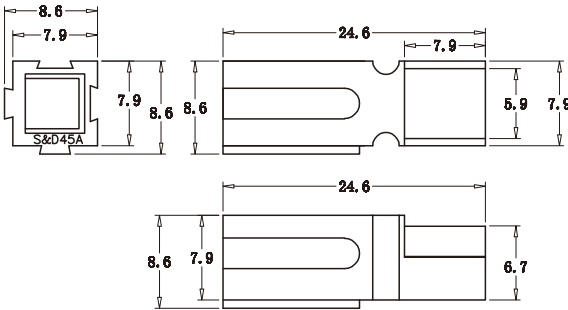
### Connectors - SD45: up to 55 Amps

SD15-45 series are the smallest housings. They can be used for wire-to-wire or wire-to-board applications. Wire sizes from #20 AWG (0.75 mm²) to #10 (6 mm²) offer power capabilities up to 55 amps per pole. Finger proof housings and the ability to incorporate first-mate last-break ground connectors enhance the capabilities of this SD series.

- 1.Rated current(Amperes): 45A
- 2.Rated voltage(Volts): 600V
- 3.Material of Terminal: Red copper
- 4.Housing Material: PC
- 5.Flammability:UL94 V-0
- 6.Standard packing qty: 500pcs/bag for housing; 500pcs/bag for terminal; mate with way: 1connector uses 1 terminal.



Part Number	Housing Color	Part Number	Housing Color
SD45H-BL	Black	SD45H-GR	Green
SD45H-BR	Brown	SD45H-BU	Blue
SD45H-RE	Red	SD45H-PU	Purple
SD45H-OR	Orange	SD45H-GY	Gray
SD45H-YE	Yellow	SD45H-WH	White

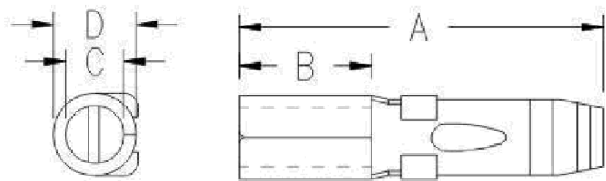


SD Series:

02/02



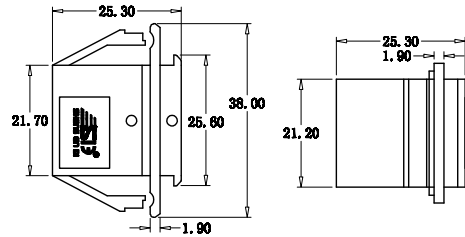
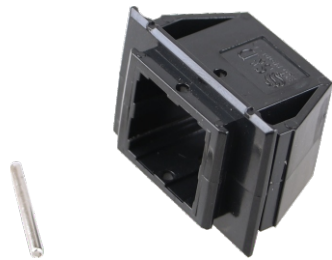
Terminal:SD5A-45A(Reel)							
Part Number	-A-(mm)	-B-(mm)	-C-(mm)	-D-(mm)	-E-(mm)	Wire	Plating
SGD261G2	17.3	6.3	5.6	5.0	11.5	10/14AWG	Tin
SGD261G1	17.3	6.3	5.0	4.6	11.5	12/16AWG	Tin
SGD262G1	17.3	6.3	3.6	3.9	11.5	16/20AWG	Tin



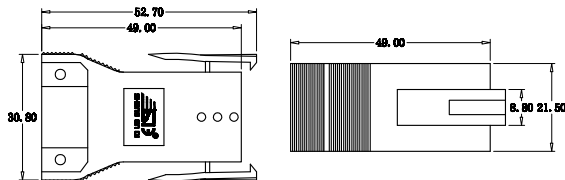
Terminal:SD5A-45A(Reel)						
Part Number	-A-(mm)	-B-(mm)	-C-(mm)	-D-(mm)	Wire	Plating
SD1331	17.4	6.3	2.8	4.0	12/16AWG	Ag

SD Series:

02/03



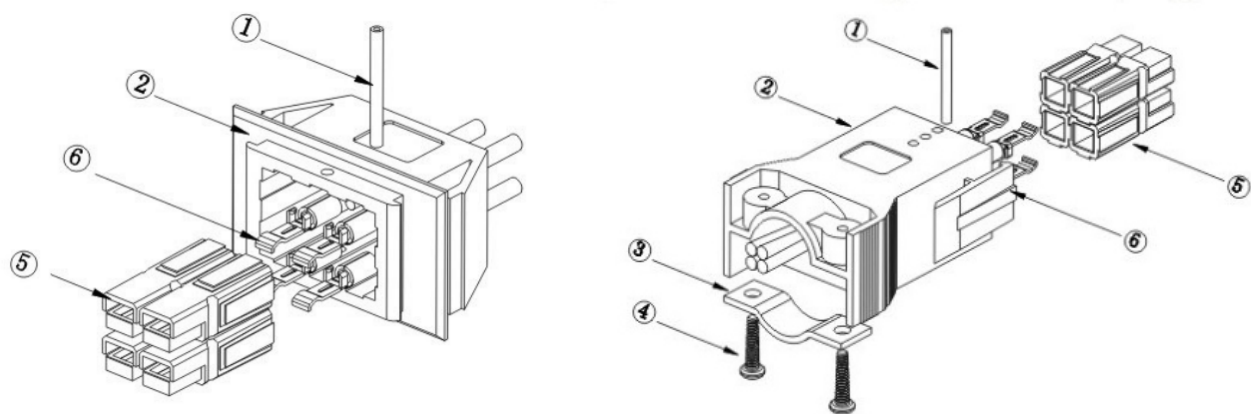
Housing with buckle(long)					
Part Number	-A-(mm)	-B-(mm)	-C-(mm)	-D-(mm)	-E-(mm)
SD1460G1	2,3,4	52.7	30.8	21.7	21.2
SD1460G2	5,6	52.7	30.8	21.7	30.3



Housing with buckle(short)							
Part Number	Pole	-A-(mm)	-B-(mm)	-C-(mm)	-D-(mm)	-E-(mm)	-F-(mm)
SD1470G1	2,3,4	38	1.7	19.6	28.0	21.6	25.4
SD1470G2	5,6	46	1.7	19.6	28.0	30.0	25.4

SD Series:

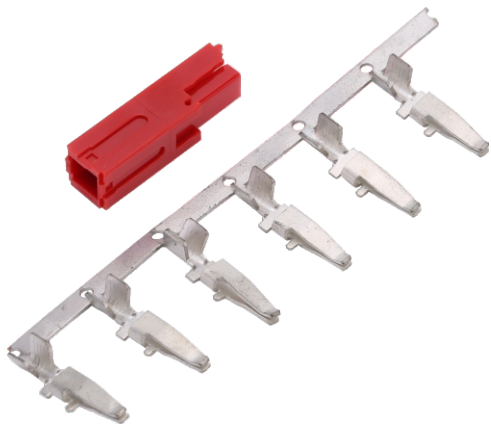
02/04



Plug with buckle(long)assembly sketch map						
Product Name	Housing without buckle short			Housing without buckle long		
	4PIN	6PIN	8PIN	4PIN	6PIN	8PIN
Bolt	SD110G9	SD110G9	SD110G9	SD110G9	SD110G9	SD110G9
Fixed seat	SD1470G4	SD1470G6	SD1470G8	SD1480G3	SD1480G6	SD1480G8
Metal clip	N/A	N/A	N/A	SD115G1	SD115G2	SD115G3
Self tapping	N/A	N/A	N/A	SD115S1	SD115S1	SD115S1
Termianl	From page					
Housing	From page					

SD Series:

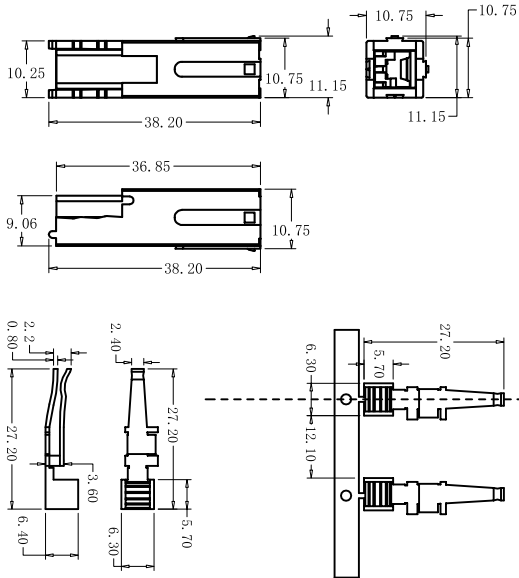
02/05



Connectors - SD55: up to 75 Amps

SD55 series are the smallest housings. They can be used for wire-to-wire applications. Wire sizes from #14 (1.5 mm²) AWG to #10(6 mm²) offer power capabilities up to 55 amps per pole. Finger proof housings and the ability to incorporate first-mate last-break ground connectors enhance the capabilities of this SD series.

- 1.Rated current(Amperes): 55A
- 2.Rated voltage(Volts): 600V
- 3.Material of Terminal: Red copper
- 4.Housing Material: PC
- 5.Flammability:UL94 V-0
- 6. Standard packing qty: 200pcs/bag for housing; 1000pcs/reel for terminal; mate with way: 1connector uses 1 terminal.



Part Number	Housing Color	Part Number	Housing Color
SD55HL-BL	Black	SD55HL-GR	Green
SD55HL-BR	Brown	SD55HL-BU	Blue
SD55HL-RE	Red	SD55HL-PU	Purple
SD55HL-OR	Orange	SD55HL-GY	Gray
SD55HL-YE	Yellow	SD55LH-WH	White

## SD Series:

02/06



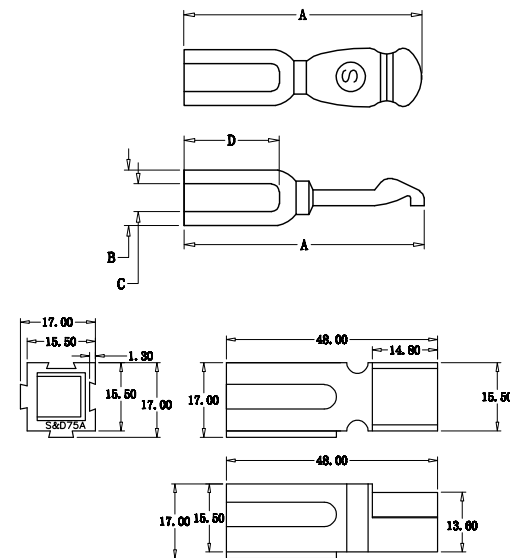
## Connectors - SD75: up to 120 Amps

SD75 series housings can be used for wire-to-wire and wire-to-board applications. Wire sizes from #16 AWG (1.3 mm<sup>2</sup>) to #6 (13.3 mm<sup>2</sup>) offer power capabilities up to 120 amps per pole. Locking housings offer the capability to secure SD housings to each other and to mounting pads. Housings made from chemical resistant (CR) resin withstand industrial solvents better than standard housings.

- 1.Rated current(Amperes): 75A
- 2.Rated voltage(Volts): 600V
- 3.Material of Terminal: Red copper
- 4.Housing Material: PC
- 5.Flammability:UL94 V-0
- 6.Standard packing qty: 100pcs/bag for housing; 500pcs/bag for terminal; mate with way: 1connector uses 1 terminal.

Part Number	Housing Color	Part Number	Housing Color
SD75HL-BL	Black	SD75HL-GR	Green
SD75HL-BR	Brown	SD75HL-BU	Blue
SD75HL-RE	Red	SD75HL-PU	Purple
SD75HL-OR	Orange	SD75HL-GY	Gray
SD75HL-YE	Yellow	SD75LH-WH	White

Part Number	-A- (mm)	-B- (mm)	-C- (mm)	-D- (mm)	Wire
SGD5900	30.5	7.0	5.6	12.0	6AWG
SGD5952	30.5	7.0	4.7	12.0	8AWG
SGD5915	30.5	7.0	3.5	12.0	10&12AWG



## SD Series:

02/07



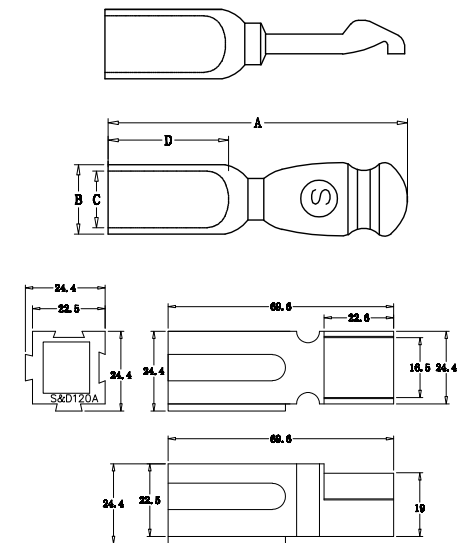
## Connectors - SD120: up to 240 Amps

SD120 series housings are designed to accommodate up to 1/0 (50 mm<sup>2</sup>) wires and handle high currents up to 240 amps. Reducing bushings allow SD120 to accept down to #8 (10 mm<sup>2</sup>) wires. Multiple colors of stackable housings combine with low resistance flat wiping technology to offer powerful connection capability.

- 1.Rated current(Amperes): 120A
- 2.Rated voltage(Volts): 600V
- 3.Material of Terminal: Red copper
- 4.Housing Material: PC
- 5.Flammability:UL94 V-0
6. Standard packing qty: 50pcs/bag for housing; 100pcs/bag for terminal; mate with way: 1connector uses 1 terminal.

Part Number	Housing Color	Part Number	Housing Color
SD120HL-BL	Black	SD120HL-GR	Green
SD120HL-BR	Brown	SD120HL-BU	Blue
SD120HL-RE	Red	SD120HL-PU	Purple
SD120HL-OR	Orange	SD120HL-GY	Gray
SD120HL-YE	Yellow	SD120LH-WH	White

Part Number	-A- (mm)	-B- (mm)	-C- (mm)	-D- (mm)	Wire
SGD6811G2	51.9	11.1	8.7	21.7	2AWG
SGD6811G4	51.9	11.1	7.5	21.7	4AWG
SGD6811G6	51.9	11.1	5.6	21.7	6AWG



# SD Series:



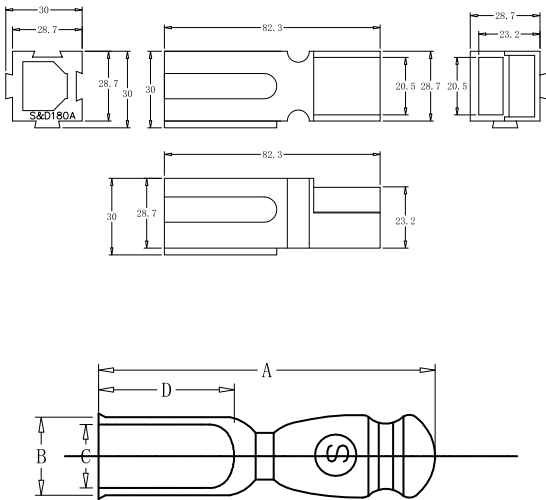
## Connectors - SD180: up to 350 Amps

SD180 are the largest of the SD series housings.They are designed to accommodate up to 3/0 (70 mm<sup>2</sup>) wires and handle high currents up to 350 amps. Busbar contacts are also available for power inputs and takeoffs.Color-coded housings minimize user confusion and the potential of cross mating circuits.

- 1.Rated current(Amperes): 180A
- 2.Rated voltage(Volts): 600V
- 3.Material of Terminal: Red copper
- 4.Housing Material: PC
- 5.Flammability:UL94 V-0
- 6. Standard packing qty: 25pcs/bag for housing; 50pcs/bag for terminal; mate with way: 1connector uses 1 terminal.

Part Number	Housing Color	Part Number	Housing Color
SD180H-BL	Black	SD180H-GR	Green
SD180H-BR	Brown	SD180H-BU	Blue
SD180H-RE	Red	SD180H-PU	Purple
SD180H-OR	Orange	SD180H-GY	Gray
SD180H-YE	Yellow	SD180L-WH	White

Part Number	-A-(mm)	-B-(mm)	-C-(mm)	-D-(mm)	Wire	Current
SGD1382	57.8	25.7	11.2	13.0	1/0AWG	175A
SGD1383	57.8	25.7	8.9	13.0	2AWG	150A
SGD1384	57.8	25.7	7.6	13.0	4AWG	120A
SGD1482	54.2	10.8	8.4	25.0	2AWG	150A
SGD1483	54.2	10.8	7.5	25.0	4AWG	120A
SGD1484	54.2	10.8	5.6	25.0	6AWG	90A





# Application Area

---

