

# SG Series 40A-350A

Combination of power connector



# Application Area



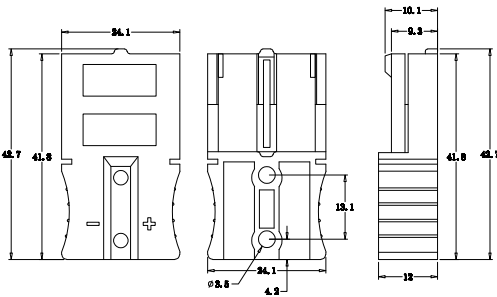
# SG Series

03/01

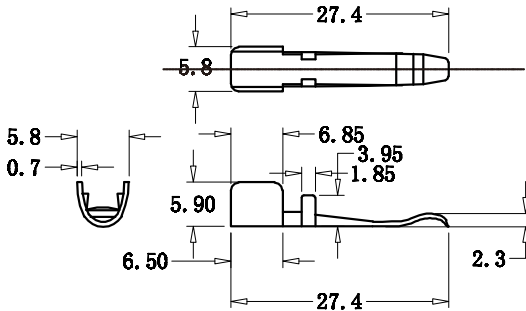
## SG40 Connectors - Up To 55 Amps

The SG40 Series connectors set the standard for DC power distribution and battery connections. SG40 connectors feature a one piece plastic housing using stainless steel springs to hold low resistance contacts in place. Wires sizes from #14 (1.5 mm<sup>2</sup>) AWG to #10(6 mm<sup>2</sup>) are held in the smallest of the SG40 series housings.

- 1.Rated current(Amperes): 40A
- 2.Rated voltage(Volts): 600V
- 3.Material of Terminal: Red copper
- 4.Housing Material: PC
- 5.Flammability:UL94 V-0
- 6. Standard packing qty: 200pcs/bag for housing; 400pcs/bag for terminal; mate with way: 1connector uses 2 terminal.



Part Number	Housing Color	Part Number	Housing Color
SG40H-BL	Black	SG40H-GR	Green
SG40H-BR	Brown	SG40H-BU	Blue
SG40H-RE	Red	SG40H-PU	Purple
SG40H-OR	Orange	SG40H-GY	Gray
SG40H-YE	Yellow	SG40H-WH	White



# SG Series:03/02



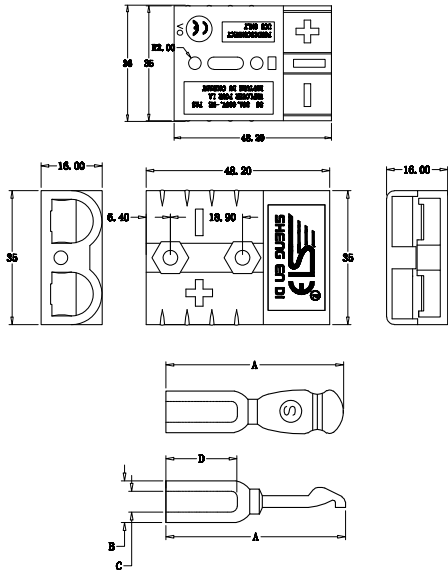
## SG50 Connectors - Up To 120 Amps

The SG50 Series connectors set the standard for DC power distribution and battery connections. SG50 connectors feature a one piece plastic housing using stainless steel springs to hold low resistance contacts in place. Wires sizes from #16 (1.5 mm<sup>2</sup>) to #6 (13.3 mm<sup>2</sup>) are held in the smallest of the SG50 series housings.

- 1.Rated current(Amperes): 50A
- 2.Rated voltage(Volts): 600V
- 3.Material of Terminal: Red copper
- 4.Housing Material: PC
- 5.Flammability:UL94 V-0
6. Standard packing qty: 50pcs/bag for housing; 500pcs/bag for terminal; mate with way: 1connector uses 2 terminal.

Part Number	Housing Color	Part Number	Housing Color
SG50H-BL	Black	SG50H-GR	Green
SG50H-BR	Brown	SG50H-BU	Blue
SG50H-RE	Red	SG50H-PU	Purple
SG50H-OR	Orange	SG50H-GY	Gray
SG50H-YE	Yellow	SG50H-WH	White

Part Number	-A-(mm)	-B-(mm)	-C-(mm)	-D-(mm)	Wire
SGD5900	30.5	7.0	5.6	12.0	6AWG
SGD5952	30.5	7.0	4.7	12.0	8AWG
SGD5915	30.5	7.0	3.5	12.0	10&12AWG



# SG Series03/03



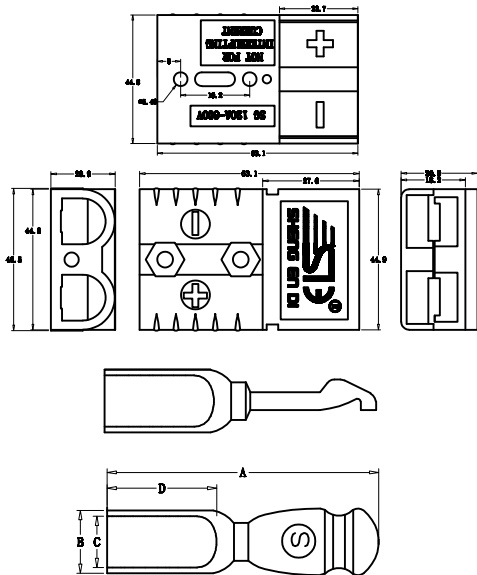
## SG120 Connectors- Up To 240 Amps

Like the other Multipole connectors, the SG120 offers color-coded mechanically keyed housings. Keys can be used to identify and separate different circuits, or prevent users from accidentally cross mating different voltages. Wires sizes from #10 (5.3 mm<sup>2</sup>) to #1 (42.4 mm<sup>2</sup>) are held in the second smallest SG120 housing.

- 1.Rated current(Amperes): 120A
- 2.Rated voltage(Volts): 600V
- 3.Material of Terminal: Red copper
- 4.Housing Material: PC
- 5.Flammability:UL94 V-0
6. Standard packing qty: 25pcs/bag for housing; 100pcs/bag for terminal; mate with way: 1connector uses 2 terminal.

Part Number	Housing Color	Part Number	Housing Color
SG120H-BL	Black	SG120H-GR	Green
SG120H-BR	Brown	SG120H-BU	Blue
SG120H-RE	Red	SG120H-PU	Purple
SG120H-OR	Orange	SG120H-GY	Gray
SG120H-YE	Yellow	SG120H-WH	White

Part Number	-A-(mm)	-B-(mm)	-C-(mm)	-D-(mm)	Wire
SGD6811G2	50.7	10.8	8.7	21.0	2AWG
SGD6811G4	50.7	10.8	7.5	21.0	4AWG
SGD6811G6	50.7	10.8	5.6	21.0	6AWG



## SG Series:

03/04



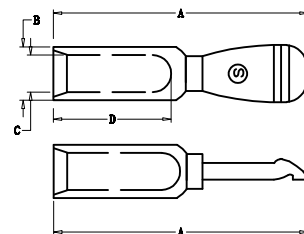
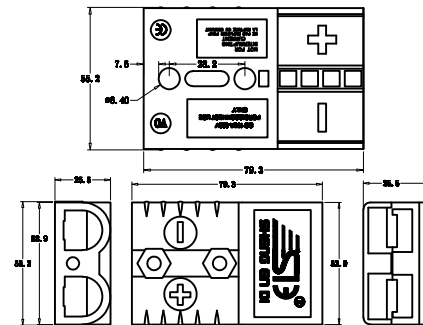
## SG175 Connectors - up to 280 Amps

Wires sizes from #10 (5.3 mm<sup>2</sup>) to 1/0 (50 mm<sup>2</sup>) fit in the second to largest connector in the SG175 series. All Multipole wire connector housings are gender less and mate to themselves minimizing inventory and assembly complexity.

- 1.Rated current(Amperes): 175A
- 2.Rated voltage(Volts): 600V
- 3.Material of Terminal: Red copper
- 4.Housing Material: PC
- 5.Flammability:UL94 V-0
6. Standard packing qty: 10pcs/bag for housing; 50pcs/bag for terminal; mate with way: 1connector uses 2 terminal.

Part Number	Housing Color	Part Number	Housing Color
SG175H-BL	Black	SG175H-GR	Green
SG175H-BR	Brown	SG175H-BU	Blue
SG175H-RE	Red	SG175H-PU	Purple
SG175H-OR	Orange	SG175H-GY	Gray
SG175H-YE	Yellow	SG175H-WH	White

Part Number	-A- (mm)	-B- (mm)	-C- (mm)	-D- (mm)	Wire	Current
SGD1382	57.8	25.7	11.2	13.0	1/0AWG	175A
SGD1383	57.8	25.7	8.9	13.0	2AWG	150A
SGD1384	57.8	25.7	7.6	13.0	4AWG	120A
SGD1482	54.2	10.8	8.4	25.0	2AWG	150A
SGD1483	54.2	10.8	7.5	25.0	4AWG	120A
SGD1484	54.2	10.8	5.6	25.0	6AWG	90A



# SG Series

03/05



## SG350 Connectors - up to 450 Amps

The SG350 is the largest connector in the series with power capabilities up to 450 amps with 4/0 wire. Wires ranging from #1/0 (50 mm<sup>2</sup>) to 300 mcm (152 mm<sup>2</sup>) fit into the one piece housing available in standard PC or a chemical resistant PBT/PC blend. Silver plated wire or busbar contacts minimize electrical resistance while offering supreme durability and reliability.

- 1.Rated current(Amperes): 175A
- 2.Rated voltage(Volts): 600V
- 3.Material of Terminal: Red copper
- 4.Housing Material: PC
- 5.Flammability:UL94 V-0
6. Standard packing qty: 1pcs housing and 2pcs terminal/bag;  
mate with way: 1connector uses 2 terminal.

Part Number	Housing Color	Part Number	Housing Color
SG350H-BL	Black	SG350H-GR	Green
SG350H-BR	Brown	SG350H-BU	Blue
SG350H-RE	Red	SG350H-PU	Purple
SG350H-OR	Orange	SG350H-GY	Gray
SG350H-YE	Yellow	SG350H-WH	White

Part Number	-A- (mm)	-B- (mm)	-C- (mm)	-D- (mm)	Wire
SGD916	75.0	12.8	11.1	26.5	1/0AWG
SGD907	75.0	15.8	12.6	26.5	2/0AWG
SGD917	75.0	15.8	16.0	31.4	3/0AWG

