

SGD Series:

04/01



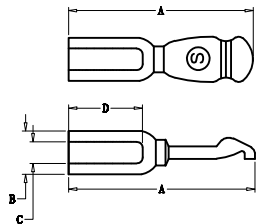
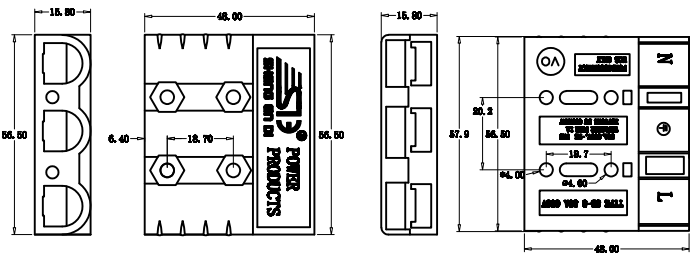
SGD50 Connectors - up to 120 amps

The SGD50 Series connectors set the standard for DC power distribution and battery connections. SGD50 connectors feature a one piece plastic housing using stainless steel springs to hold low resistance contacts in place. Wires sizes from #16 (1.5 mm²) to #6 (13.3 mm²) are held in the smallest of the SGD50 series housings.

- 1.Rated current(Amperes): 50A
- 2.Rated voltage(Volts): 600V
- 3.Material of Terminal: Red copper
- 4.Housing Material: PC
- 5.Flammability:UL94 V-0
- 6. Standard packing qty: 20pcs/bag for housing; 60pcs/bag for terminal; mate with way: 1connector uses 3 terminal

Part Number	Housing Color	Part Number	Housing Color
SGD50H-BL	Black	SGD50H-GR	Green
SGD50H-BR	Brown	SGD50H-BU	Blue
SGD50H-RE	Red	SGD50H-PU	Purple
SGD50H-OR	Orange	SGD50H-GY	Gray
SGD50H-YE	Yellow	SGD50H-WH	White

Part Number	-A-(mm)	-B-(mm)	-C-(mm)	-D-(mm)	Wire
SGD5900	30.5	7.0	5.6	12.0	6AWG
SGD5952	30.5	7.0	4.7	12.0	8AWG
SGD5915	30.5	7.0	3.5	12.0	10&12AWG



SGD Series

04/02



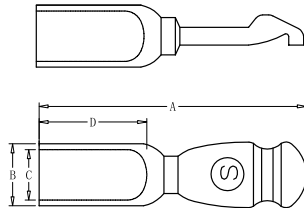
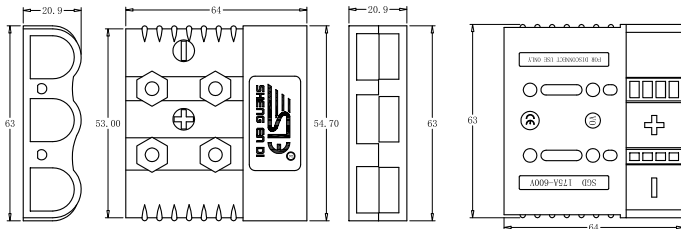
SGD120 Connectors- up to 240 Amps

Like the other Multipole connectors, the SGD120 offers color-coded mechanically keyed housings. Keys can be used to identify and separate different circuits, or prevent users from accidentally cross mating different voltages. Wires sizes from #10 (5.3 mm²) to #1 (42.4 mm²) are held in the second smallest SGD120 housing.

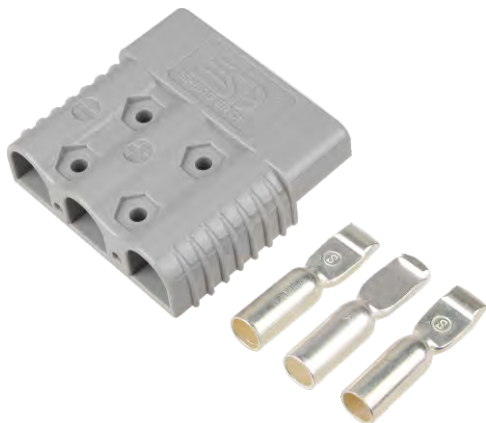
- 1.Rated current(Amperes): 120A
- 2.Rated voltage(Volts): 600V
- 3.Material of Terminal: Red copper
- 4.Housing Material: PC
- 5.Flammability:UL94 V-0
- 6. Standard packing qty: 10pcs/bag for housing; 15pcs/bag for terminal; mate with way: 1connector uses 3 terminal.

Part Number	Housing Color	Part Number	Housing Color
SGD120H-BL	Black	SGD120H-GR	Green
SGD120H-BR	Brown	SGD120H-BU	Blue
SGD120H-RE	Red	SGD120H-PU	Purple
SGD120H-OR	Orange	SGD120H-GY	Gray
SGD120H-YE	Yellow	SGD120H-WH	White

Part Number	-A-(mm)	-B-(mm)	-C-(mm)	-D-(mm)	Wire
SGD1319G2-T	50.2	10.8	8.7	21.0	2AWG
SGD1319G4-T	50.2	10.8	7.5	21.0	4AWG
SGD1319G6-T	50.2	10.8	5.6	21.0	6AWG



SGD Series:

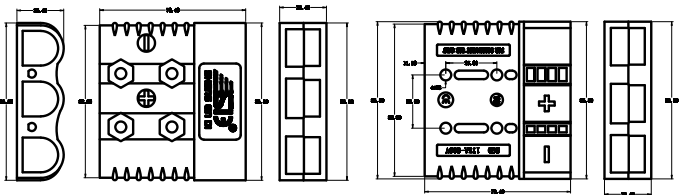


SGD175 Connectors - up to 280 Amps

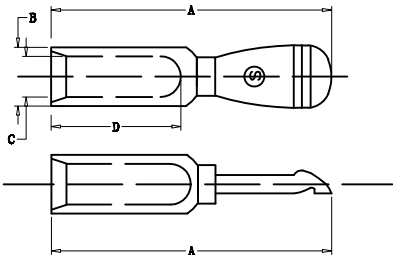
Wires sizes from #10 (5.3 mm²) to 1/0 (50 mm²) fit in the second to largest connector in the SGD175 series. All Multipole wire connector housings are gender less and mate to themselves minimizing inven-tory and assembly complexity.

- 1.Rated current(Amperes): 175A
- 2.Rated voltage(Volts): 600V
- 3.Material of Terminal: Red copper
- 4.Housing Material: PC
- 5.Flammability:UL94 V-0
- 6. Standard packing qty: 5pcs/bag for housing; 15pcs/bag for terminal; mate with way: 1connector uses 3 terminal.

Part Number	Housing Color	Part Number	Housing Color
SGD120H-BL	Black	SGD120H-GR	Green
SGD120H-BR	Brown	SGD120H-BU	Blue
SGD120H-RE	Red	SGD120H-PU	Purple
SGD120H-OR	Orange	SGD120H-GY	Gray
SGD120H-YE	Yellow	SGD120H-WH	White



Part Number	-A-(mm)	-B-(mm)	-C-(mm)	-D-(mm)	Wire	Current
SGD1382	57.8	25.7	11.2	13.0	1/0AWG	175A
SGD1383	57.8	25.7	8.9	13.0	2AWG	150A
SGD1384	57.8	25.7	7.6	13.0	4AWG	120A
SGD1482	54.2	10.8	8.4	25.0	2AWG	150A
SGD1483	54.2	10.8	7.5	25.0	4AWG	120A
SGD1484	54.2	10.8	5.6	25.0	6AWG	90A



Application Area

