

MPPT

Solar Charge Controller

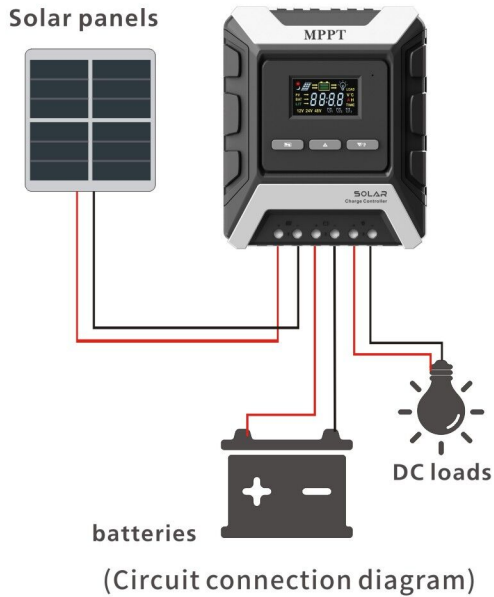


MPPT

Solar power controller

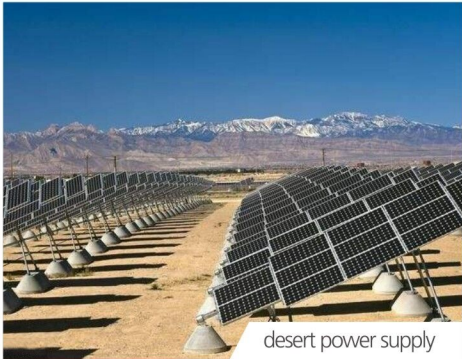
Its full name is the maximum power point tracking solar charge controller

Maximum power point tracking system is an electrical system that can effectively store the direct current which generated by solar panels in storage batteries by adjusting the working status of electrical modules. It can effectively solve the living and industrial power consumption in remote areas or tourist areas where can not be covered by conventional power grids without cause any environmental pollution. The output power of photovoltaic cell is related to the working voltage of MPPT controller, and its output power will reaches to the unique maximum value when it works at the most suitable voltage.



- LCD Display
- Wide voltage & Current
- MPPT Function
- 8 Protections Fuction

Applicatino Scenarios



Technical parameter

Model	10A20A	30A40A	50A60A
Parameter Characteristics			
System Voltage	12V 24V 48V	12V 24V 48V	12V 24V 48V
Max.Solar Power Input	240W/480W/960W	480W/960W/1600W	720W/1440W/2880W
DC Input			
MPPT Voltage	12V < operating voltage < 80V		
Open-circuit Voltage of Solar Module (in minimum operating temperature)	15V~80V	15V~80V	15V~80V
Module Current	20A	Max. 40A	Max. 60A
DC Output			
Load Current	0~20A	0~40A	0~60A
Reconnect Voltage (LVR)	12.5V/28.2V/56.4V	12.5V/28.2V/56.4V	12.5V/28.2V/56.4V
Deep Discharge Protection (LVD)	11.5V/23V/46V	11.5V/23V/46V	11.5V/23V/46V
Battery			
Charging Current	10A(20A)	30A(40A)	50A(60A)
Charging Completed Voltage	14.2V/28.4V/56.6V	14.2V/28.4V/56.6V	14.2V/28.4V/56.6V
Floating Charging Voltage	14.4V/28.8V/57.6V	14.4V/28.8V/57.6V	14.4V/28.8V/57.6V
Constant Charging	15V/30V/60V	15V/30V/60V	15V/30V/60V
Set Battery Type	liquid	liquid	liquid
Operating Condition			
Environment Temperature	-20℃~+40℃	-20℃~+40℃	-20℃~+40℃
Accessories & Installation			
Product Size	130*156*50mm	153*190*53mm	193*227*58mm